



# **2024 JOINT IKA & WISSA SNOW & ICE RACING WORLD CHAMPIONSHIPS**

## **NOTICE OF RACE & SAILING INSTRUCTIONS (NoR/SI)**

To be supplemented by Local Sailing Instructions (LSI)

Initial Version: 17 November 2024

# 1 DATE AND VENUE

---

Venue	Organizing Authority	Dates
<b>Madison, WI USA</b> 43°04'47.4"N 89°23'25.8"W	Clean Lakes Alliance and Madison Sports Commission under the authority of the International Kiteboarding Association (IKA) and the World Ice and Snow Sailing Association (WISSA)	02 Feb - 09 Feb 2025

If the event is cancelled, any paid entry fees will be refunded in full.  
The organizing authority will not be liable for any other expenses incurred.

# 2 RULES

---

- 2.1 The event is governed by the rules as defined in The Racing Rules of Sailing (RRS). Other documents under RRS Definition: Rule (g) are published on the Official Notice Board and include:
  - 2.1.1 [NP] [DP] [SP] The Equipment Regulations (ER);
  - 2.1.2 [NP] [DP] [SP] The Support Team Regulations (including Support Vessels) (STR); and
  - 2.1.3 [NP] [DP] [SP] The Athlete Media Regulations (AMR)
- 2.2 For the Kiteboarding events, RRS Appendix F applies.
- 2.3 For the Wing and Sled events, RRS Appendix B as changed by the WINTER WINDSURFING RULES WWR6.1 (see <https://www.manage2sail.com/en-US/Home/DownloadDocument/fee81e22-5c58-40d6-b1c5-5d7f46e64ae4>) apply.
- 2.4 No national prescriptions apply.
- 2.5 Local Sailing Instructions (LSI) will be published no later than on the day before the first warning signal and may change or supplement rules in these NoR/SIs.
- 2.6 In all rules governing the event;
  - 2.6.1 The terms 'rider', 'competitor', 'crew', and 'athlete' mean a person competing, or intending to compete, in the event;
  - 2.6.2 [SP] denotes a rule for which a standard penalty may be applied by the race committee or technical committee without a hearing. Additional rules marked [SP] are listed in NoR/SI 18. This changes RRS A5.1.
  - 2.6.3 [NP] denotes a rule that shall not be grounds for protest by a kiteboard and for which the protest committee may refuse to hold a hearing. Additional rules marked [NP] are listed in NoR/SI 18. This changes RRS 60.1(a) and 63.1.
- 2.7 If there is a conflict between languages the English text will take precedence.
- 2.8 Changed and added Rules:
  - 2.8.1 Add rule RRS 62.1(e): the action of a drone, or any other flying device.
  - 2.8.2 Actions by event officials to implement medical pandemic guidance, protocols, or legislation, even if they later prove to have been unnecessary, will not be grounds for redress. This changes RRS 62.1(a).
  - 2.8.3 From 1 hour before the scheduled warning signal of the first race until the end of the protest time of the last race of the event, a competitor may change their kite/wing/sail but only in the designated launching and rigging area.
  - 2.8.4 For the Course Racing and Marathon format: RRS B.31 and F.31 are deleted. Competitors and their equipment shall not touch a mark.

# 3 EVENTS, QUOTAS AND ELIGIBILITY

---

3.1 There will be competition in the following events, classes and division:

Event	Class	Divisions
<b>Kite</b>	Ski	Open / U21 / U17 / Master / Grandmaster
	Snowboard	Open / U21 / U17 / Master / Grandmaster
<b>Wing</b>	Rigid	Open / U24 / U17 / Master / Grandmaster / Veteran
	Inflatable	Open / U24 / U17 / Master / Grandmaster / Veteran
<b>Sled</b>	With rig (mast/boom)	Open / U24 / U17 / Master / Grandmaster / Veteran

U24: born 2002 or after

U21: born 2005 or after

U17: born 2009 or after

Master: born 1984 or before

Grand Master: born 1987 or before

Veteran: born 1964 or before

There will be no age division in the GPS-Speed discipline

3.1.1 Exceptions to the maximum quota may be made at the discretion of the organizing authority.

3.1.2 A minimum of five competitors is required to establish an age division. The Organizing Authority may merge age divisions if the number of competitors does not satisfy age division or class minimums.

3.1.3 Competitors that qualify for more than one age division shall chose the division they wish to be ranked in. A competitor shall be only ranked in one age division (other than "open").

3.1.4 The Organizing Authority may cancel an event if the minimum number of 30 entries has not been confirmed and paid 14 days before the on-site registration day of the event. Competitors will be notified of event cancellation by email and posting on the event website. Entry fees will be refunded.

3.2 On 1 March 2022 World Sailing published the following recommendations in reaction to the situation in Ukraine: <https://www.sailing.org/2022/03/01/world-sailing-statement-6/>. To help preserve the integrity and safety of the event, entries shall not be open to competitors and support persons holding only Russian or Belarussian nationality. The Organizing Authority may amend this rule following any further World Sailing decisions on the situation with Russia and Belarus.

3.3 Each athlete shall be a national of the country they represent.

# 4 ENTRY, REGISTRATION AND FEES

---

4.1 Competitor registrations shall be made through <https://www.windworlds.com/sign-up.html>. Late registrations may be accepted during on-site registration.

4.2 Entries will be accepted on a first come-first served basis.

4.3 Registration fees per competitor are as follows (all plus credit card fees) and are not refundable except if the event is cancelled:

	Before 1 Jan.	Between 1-15 Jan.	After 15 Jan. & on-site
Adult Pro (Kite, Wing, Sled)	\$250	\$300	\$340
Adult Rec (Kite, Wing, Sled)	\$55	\$75	\$85
Adult Big Air	\$115	\$150	\$170
Youth	\$40	\$60	\$70

Entry Fees are not refundable

- Adult Pro = Professional & elite riders: 5-days of racing including: course, marathon, speed, VIP access, and all events and ceremonies. Tuesday through Saturday.
- Adult Rec = 2.5 days of racing including: course, marathon, speed, and all events and ceremonies
- Adult Big Air = 2.5 days of competitions including Freestyle and big air competitions, speed, VIP access, and all events and ceremonies
- Youth = U21: born 2005 or after and University Students of any age, not participating in Pro/Elite: 2.5 days of racing, or Freestyle and Big Air, and all events and ceremonies

4.4 Competitors shall provide the following documentation prior to completing registration formalities on site:

- Proof of entry fee payment;
- Proof of nationality;
- Proof of age;
- Parental/legal guardian consent - for those under the age of 18; (see attachments) and
- Medical Treatment Permission - for those under the age of 18 or on their parent's medical insurance policy (see attachments).

4.5 Support Teams

4.5.1 Support persons, support team vessels and team leaders shall be registered online and comply with local legislation and the Support Team Regulations. The local organizing authority may refuse registrations or accept later registrations at their discretion.

4.5.3 The registration fee for support persons are as follows:

Support Person Type	Entry Fee
Other Support Persons (incl. benefits as for competitors)	50 EUR

The amount shall be paid in cash during on-site registration or via credit card during the registration process.

4.5.4 Support persons shall provide the following documentation prior to completing registration formalities on site:

- Proof of registration fee payment;
- List of athletes or MNAs supported;

4.6 [NP] [SP] [DP] Competitors, support persons and team leaders shall personally sign the registration form at the Race Office at the specified time.

- 4.7 An entry is not complete until payment has been received and the kiteboard or support person has completed registration. Registration may include equipment and entry requirement checks.

## 5 SCHEDULE

- 5.1 The schedule will be as follows (all times are local):

Date	Activity	Time
<b>02 February 2025</b>	Arrival, venue opens	
<b>03 February 2025</b>	Racing On-Site Registration	1200-1600
	Opening Ceremony	1800
<b>04 February 2025</b>	Racing On-Site Registration	0800-0930
	Racing Competition (see Addendum 3)	1000
<b>05 February 2025</b>	Racing Competition (see Addendum 3)	1000
<b>06 February 2025</b>	Racing Competition (see Addendum 3)	1000
<b>07 February 2025</b>	On-Site Registration Recreational and Freestyle	0800-0900
	Racing Competition (see Addendum 3)	1000
	Freestyle Competition (see Addendum 3)	1300
<b>08 February 2025</b>	Racing Competition (see Addendum 3)	0900
	Freestyle Competition (see Addendum 3)	1000
	Marathon Competition (see Addendum 3)	1400
	Prize Giving	1900
<b>09 February</b>	Freeride, Departure, venue closes	

- 5.2 There will be a daily briefing for competitors and support persons / team leaders 60 minutes before the first scheduled warning signal of each day in the Edgewater Hotel
- 5.3 Addendum 3 shows the provisional race schedule, including the time of the first warning signal and the number of scheduled races.
- 5.4 Any change to Addendum 3 will be posted no later than 21:00 on the previous evening of any race affected.
- 5.5 The Race Committee may change the schedule to sail one race ahead of schedule.
- 5.6 Not more than a total of 6 course races or 12 short track slalom races per fleet will be sailed per day.
- 5.7 The first warning signal for the first race on 04 February 2025 will not be made before 1100.
- 5.9 On the last scheduled day of racing no warning signal will be made after 1600.

## 6 FORMAT AND SCORING

- 6.1 One race for all fleets is required to be completed to constitute an event.
- 6.2 The racing formats per event will be:

Discipline	Event	Number of Races
<b>Course Racing</b>	Kite, Sled, Wing	
<b>GPS-Speed</b>	Kite, Sled, Wing	unlimited

- 6.3 Division rankings (if any) will be established by simple extraction from the overall standings.
- 6.4 To request correction of an alleged error in posted race or series results, a kiteboard may submit a scoring enquiry through the online platform.
- 6.5 **Course Racing**
- 6.5.1 The format is a Single Series  
The Single Series may be divided into a Qualifying Series and a Final Series.
- 6.5.2 When there is a Final Series, it will be scheduled for the two last racing days.
- 6.5.3 When the format includes a Qualifying Series:
- a) On the first day of racing, competitors will be assigned to fleets yellow, blue, red etc., of, as nearly as possible, equal size and ability. Assignments will be made by the race committee based on the kiteboards' current standing in the world ranking and will be posted at least 30 minutes before the first warning signal is made. Those assignments will not be grounds for redress. This changes RRS 62.1(a).
  - b) Competitors will be reassigned to fleets after each day of racing, except if only one race is completed. If all fleets have completed the same number of races, kiteboards will be reassigned on the basis of their ranks in the series. If all fleets have not completed the same number of races, the series scores for reassignment will be calculated for those races, numbered in order of completion, completed by all fleets. For three fleets, and similarly for any other number, reassignments will be made as follows:
 

First	Yellow	
Second		Blue
Third	Red	
Forth	Red	
Fifth	Blue	
Sixth	Yellow	
Seventh	Yellow	

 etc.
  - c) Reassignments of fleets will be based on the ranking available at 2100 on the day before they take effect, regardless of pending hearings.
  - d) If all fleets have not completed the same number of races by the end of a day, the fleets with fewer races will continue racing the following day until all fleets have completed the same number of races. All competitors will thereafter race in the new fleets.
  - e) If at the end of the Qualifying Series some competitors have more race scores than others, scores for the most recent races will be excluded so that all kiteboards have the same number of race scores.
  - f) RRS A5.2 is changed so that the scores are based on the number of competitors assigned to the biggest fleet.
- 6.5.4 If 5 or more races are completed over a minimum of two days on which racing took place by each fleet at the end of the Qualifying Series:
- a) Competitors will be assigned to fleets gold, silver, bronze etc., based on their Qualifying Series ranking. There will be the same number of fleets in in the Final Series as there were in the Qualifying Series. The Final Series fleets will have, as nearly as possible, equal size and the Gold fleet will not be smaller than any other fleet. Competitors with the best Qualifying Series ranks will race all Final Series races in fleet gold, competitors with the next-best Qualifying Series ranking will race in fleet silver, etc.
  - b) Any recalculation of rankings after competitors have been assigned to Final Series fleets will not affect the assignments except that a redress decision may promote a competitor to a higher fleet.

- c) When breaking ties, only Final Series races shall be considered. This changes RRS A8.
- 6.5.5 For Wing and Sled only classes only, the winner of a race will score 0.7 points. This changes RRS A4
- 6.5.5 A competitor's series score will be the total of their race scores except that:
- when from 3 to 6 races have been completed her worst score will be excluded;
  - when from 7 to 10 races have been completed her two worst scores will be excluded;
  - when 11 or more races have been completed her three worst scores will be excluded;
- however, not more than one score from the Final Series may be excluded when less than five Final Series races have been completed, and not more than two scores from the Final Series may be excluded when five or more Final Series races have been completed.
- This changes RRS A2.
- 6.5.6 When there is a Final Series, competitors will be ranked in the order of the competitors competing in fleets gold, silver, bronze, etc. This may not apply to a competitor disqualified under RRS 6 or 69.
- 6.6 **Marathon**
- 6.6.1 The Marathon is a single race.
- 6.6.2 The scoring system will be described in the Local Sailing Instructions or the Marathon Race amendment.
- 6.7 **GPS-Speed**
- 6.7.1 The result of the fastest 5x10 sec as measured by the rules described here - <https://www.gps-icesailing.com/default.aspx?mnu=item&item=BasicRules> will be used to establish the ranking .
- 6.7.2 GPS devices which may be used are found on this link: Home - gps-speedsurfing The OA will not provide GPS devices and RACERS MUST HAVE APPROVED DEVICES TO BE ENTERED IN THIS COMPETITION.
- 6.7.3 GPS data shall be uploaded to GPS-icesailing.com (event WISSA2025) not later than Saturday 08 February at 8:00am.

## 7 NOT IN USE

---

## 8 COURSES AND RACING AREAS

---

- 8.1 The diagrams in Addendum 1 show the courses, the course designations, the approximate angles between legs, the order in which marks are to be passed, and the side on which each mark is to be left.
- 8.2 No later than the warning signal, the race committee starting position will display the course to be sailed.
- 8.3 If mark P is not set, it shall be disregarded.
- 8.4 Courses will not be shortened. This changes RRS 32.
- 8.5 Courses will not be changed. This changes RRS 33.
- 8.6 Addendum 4 shows the location of the venue and the course area.

# 9 STARTING AND FINISHING

## Course Racing - Kites

- 9.1 To alert competitors that a race or sequence of races will begin soon, the starting line flag will be displayed with one sound at least two (2) minutes before a warning signal is made.
- 9.2 The warning signal for each succeeding race will be made as soon as practicable.
- 9.3 The starting line will be between a staff displaying an orange flag on the race committee position and either:
- the course side of the port-end inflatable mark, or
  - a staff displaying an orange flag on the race committee position on the port end.

## Course Racing – Wings and Sleds

- 9.4 A standing start will be used
- 9.5 The starting position for first races shall be organized randomly. For subsequent starts standing position depends from result of previous races.
- 9.6 RRS 26 is deleted and replaced with:

Minutes to start	Visual Signal	Sound Signal	Means
3 or more	Class Flag	One	Warning Signal, On Your Mark
1 or more	Black Flag	One long	Set
Start	Black Flag removed	One	Start

- 9.7 A competitor starting later than 1 minute after her starting signal will be scored Did Not Start. This changes RRS A5.1 and A5.2
- 9.6 [NP] [DP] When a starting sequence is in progress, competitors whose warning signal has not been made shall avoid the starting area. The starting area is defined as an area 300 meters from the starting line and marks in all directions.
- 9.7 The finishing line will be between a staff displaying a blue flag and the course side of the nearby finishing mark or flag.
- 9.8 [NP] [DP] Competitors that have finished shall sail clear of the finish area.

# 10 TIME LIMITS AND TARGET TIMES

- 10.1 Time limits and target times, in minutes, are as follows:

	Target Time	Race Time Limit	Mark 1 Time Limit	Finishing Window
Course Race	15	30	6	10
Marathon	60	90	N/A	30

- 10.2 If no competitor has passed Mark 1 within the Mark 1 time limit, the race will be abandoned.
- 10.3 Not meeting the target time will not be grounds for redress. This changes RRS 62.1(a).



- 10.4 Competitors not finishing within the Finish Time Window (time after the first competitor starts, sails the course and finishes) will be scored Did not Finish without a hearing. This changes RRS 35, A5.1 and A5.2

## 11 [NP] [DP] [SP] IDENTIFICATION AND ADVERTISING

---

- 11.1 When provided by the organizing authority, competitors shall carry, display or wear the following as instructed:
- 11.1.1 Competition bibs for all competitors with an individually assigned competition number, worn as intended over all other clothing and equipment at any time when afloat;
  - 11.1.2 Event leader bibs, worn as intended over all other clothing and equipment at any time when afloat;
  - 11.1.3 Event advertising and Look of the event;
  - 11.1.4 Cameras, camera dummies, sound and other media equipment;
  - 11.1.5 Tracking, timing and electronic umpire system equipment.
- 11.2 Competitors and equipment shall not display advertising from previous events.

## 12 COMMUNICATION

---

- 12.1 The official notice board and event management system for requests is online here: <https://yachtscoring.com/emenu.cfm?eID=16942>
- 12.1.1 Complementary information may be posted on a notice board in the venue.
  - 12.1.2 Informal communication may be sent through WhatsApp <https://chat.whatsapp.com/Jy85P0RtdJyCsl0ns1z6Oua>
- 12.2 The location of the official flagpole will be described in the LSI.
- 12.3 When flag AP is displayed ashore, '1 minute' is replaced with 'not less than 20 minutes' in the race signal AP. This changes RRS Race Signals.
- 12.4 Flag K displayed with two sounds means 'competitors are given time to change their equipment. Races not started are postponed. The warning signal will be made not less than 10 minutes after the flag is displayed.'
- 12.7 A signal displayed at the finish vessel applies only to the fleet that is finishing. This changes RRS Race Signals preamble.
- 12.8 While racing, except in an emergency or when using equipment provided by the race committee or Organising Authority, a competitor shall not make voice, radio or data transmissions and shall not receive voice, radio or data communication that is not available to all competitors. This restriction also applies to mobile telephones. GPS watches with the sole functionality to record tracks and speed and not giving feedback to the competitor during racing (except for GPS-Speed) are exempt from this rule.

## **13 CHANGES TO NOTICE OF RACE AND SAILING INSTRUCTIONS**

---

Any change to the NoR/SI and the LSI will be posted 30 minutes before it will take effect.

## **14 [NP] [DP] [SP] SAFETY REGULATIONS**

---

When Flag G is displayed ashore, competitors returning ashore shall either personally check in at the official flag pole where the flag is displayed, or be reported as safe by their support persons.

## **15 [NP] [DP] CODE OF CONDUCT**

---

15.1 Competitors and support persons shall:

15.1.1 comply with any reasonable request from an event official. Non-compliance may be misconduct.

15.1.2 not in any way interfere with the functionality of supplied media or timing equipment.

15.2 Competitors not racing shall remain clear of areas where competitors are racing and any official position.

## **16 NOT IN USE**

---

## **17 NOT IN USE**

---

## **18 HEARING REQUESTS AND PENALTIES**

---

18.1 Hearing request forms are available through the online platform.

- 18.2 The protest time limits will be described in the LSI.
- 18.3 Notices will be posted within 15 minutes of the protest time limit to inform competitors of hearings in which they are parties or named as witnesses. Hearings will be held beginning at the time and location posted. Hearings may be scheduled to begin up to 15 minutes before the end of the protest time limit.
- 18.4 Penalties for breaches of the ER, STR, AMR, RRS 50RRS 78.1, class rules, or rules in the NoR and SIs marked [DP], should the case go to a hearing, are at the discretion of the protest committee.
- 18.5 For breaches of NoR/SI marked [SP], breaches of ER 2.3 and 2.4, or breaches of RRS 50 in conjunction with Class Rules the race committee or technical committee may apply a standard penalty without a hearing to the race(s) closest in time to the incident. The scores of other kiteboards shall not be changed; therefore, two competitors may receive the same score. However, the race committee or technical committee may protest a competitor when they consider the standard penalty to be inappropriate. A competitor that has been penalized with a standard penalty can neither be protested for the same incident by another competitor nor can another competitor request redress for this race committee or technical committee action. This changes RRS 60.1, 63.1 and RRS A5.1.
- 18.6 RRS 62.2(a) and 66.2(a) also apply on the last day of the Qualifying Series, Final Series and the last day of the Opening Series.

## 19 [DP] SUPPORT TEAMS INCLUDING SUPPORT TEAM VESSELS

---

- 19.1 By registering as a support person, each such person agrees to be governed by the rules.
- 19.2 A support team vessel includes any vessel that is under the control or direction of a support person as defined in the RRS and also includes any person gathering data that may be used by a team or competitor.
- 19.3 Except when participating in rescue operations as requested or instructed by the race committee, support vessels shall remain in a distance of at least 300m from any area where racing could take place from the time of the preparatory signal for the first group to start until all kiteboards have finished or retired or the race committee signals a postponement, general recall or abandonment.

## 20 [NP] [DP] PRIZES, VICTORY CEREMONY

---

- 20.1 The designation and award of Ice and Snow Sailing World Champion will be presented to the top male and female competitor in: Course Racing, Marathon, Speed, Freestyle and Big Air.
- 20.2 MEDALS and DIPLOMA will be awarded to three competitors in each class.
- 20.3 If a competitor who finished in the top 3 leaves the event before the conclusion of the victory ceremony or, if other competitor, leaves the venue before the day before the victory ceremony, the OA may exclude that competitor from the next Championship or impose any similar sanction.

- 20.4 The OA may reduce or remove a prize in the case of misconduct or refusal to comply with any reasonable request, including attendance at official functions.

## 21 [NP] [DP] INSURANCE

---

- 21.1 Each 'person in charge' (see RRS 46) shall hold a valid insurance certificate showing proof of third-party liability coverage of at least 500.000 USD or equivalent per incident.
- 21.2 Each support vessel shall have valid insurance including third party liability coverage of at least 1.500.000 USD (or equivalent) per incident.
- 21.3 The Organizing Authority is not responsible for verifying the status or validity of certificates.

## 22 DOPING CONTROL

---

Competitors are reminded of the World Sailing rules and regulations concerning the use of banned methods and substances, which are contained in the World Sailing Anti-Doping Code. Drug testing may take place during this event.

## 23 RISK STATEMENT

---

- 23.1. In cases of force majeure or on grounds of administrative orders or for safety reasons, the organizing authority is entitled to make changes in the realization of the event or to cancel the event. This does not constitute any liability by the organizer towards the participant, if the reasons for the changes or the cancellation do not result from a wilful or grossly negligent behaviour of the organizer.
- 23.2 In case of a violation of obligations that do not constitute primary or material contractual duties (cardinal obligations), the liability of the organizer for financial and property damages incurred by the participant during or in connection with the participation in the event and resulting from a conduct of the organizer, the involved classes and their representatives, servants or agents (including but not limited to race committee, protest committee and technical committee), is restricted to damages that were caused wilfully or grossly negligent. When a violation of cardinal obligations occurs due to minor negligence, the liability of the organizer is limited to foreseeable, typical damages.
- 23.3 Competitors and support persons participate in the event entirely at their own risk and they are reminded of the provisions of RRS 3, Decision to Race. Sailing is by its nature an unpredictable sport and therefore involves an element of risk. By taking part in the event, each competitor agrees and acknowledges that:
- They acknowledge that there are risks involved in the Event. They fully realise the dangers of participating in the Event, and fully assume the risks associated with their participation and their wellbeing and safety during and after the Event.
  - They understand and acknowledge that the Event organisers (including all officials and event volunteers) provide no warranties, regarding their wellbeing and safety.
  - They acknowledge that participating in this event may involve a test of a person's physical and mental limits and carries with it the potential for death, serious injury, and property loss. The risks include, but are not limited to,

those caused by the elements, facilities, temperature, weather, condition of participants, equipment, vehicular traffic, lack of hydration, and actions of other people including, but not limited to, participants, volunteers, officials, and/or producers of the event.

- They agree that to the extent permissible by law, World Sailing, the International Kiteboarding Association, WISSA, their classes, the event organisers (including all officials and event volunteers), IKA, WISSA, the sponsors and other parties associated with the Event, have no liability to them whatsoever for any direct or indirect loss, (including, but not limited to injury or death) sustained by them during or in any way related to their participation in the Event.
- They WAIVE, RELEASE, AND DISCHARGE from any and all liability, including but not limited to, liability arising from the negligence or fault of the entities or persons released, for their death, disability, personal injury, property damage, property theft, or actions of any kind which may hereafter occur to them including their traveling to and from this event, THE FOLLOWING ENTITIES OR PERSONS: World Sailing, The International Kiteboarding Association, WISSA, their classes, the event organisers (including all officials and event volunteers), IKA, WISSA, the sponsors and other parties associated with the Event, employees, volunteers, representatives, and agents, and the event holders, sponsors, and volunteers;
- They INDEMNIFY, HOLD HARMLESS, AND PROMISE NOT TO SUE the entities or persons mentioned in the above paragraphs from any and all liabilities or claims made as a result of participation in this event, whether caused by the negligence of release or otherwise.
- They have taken medical advice on any pre-existing medical conditions and confirm that it is medically safe for them to participate in the Event.
- They are responsible for the safety of themselves, their equipment and their other property at any time.
- They are satisfied that their equipment is in good order, equipped to compete in the event and they are fit to participate;
- They accept responsibility for any injury, damage or loss to the extent caused by their own actions or omissions;
- They consent to receive medical treatment which may be deemed advisable in the event of injury, accident, and/or illness during this event.
- They acknowledge that the provision of a race management and rescue team, judges, umpires and other officials and volunteers by the organizer does not relieve them of their own responsibilities;
- They acknowledge that the provision of rescue craft cover is limited to such assistance, particularly in extreme weather conditions, as can be practically provided in the circumstances.
- Participants are made aware that small unmanned aircrafts (drones) may fly over them and operate in close vicinity to them.

## 24 [NP] [DP] [SP] MEDIA RIGHTS

- 
- 24.1 By participating in the event, competitors and support persons automatically grant to the organizing authority, IKA, WISSA, all involved classes, their sponsors and World Sailing, the right in perpetuity to make, use and show, from time to time at their discretion, any motion pictures and live, taped or filmed television and other reproductions of the athlete during and after the period of the event without compensation.

24.2 Competitors shall comply with the Athlete Media Guide (AMR). The AMR will include further information on television production, press conferences, interviews, mixed zones, and promotion of the event.

## 25 DATA PROTECTION AND PRIVACY

---

With registration the competitor or support person agrees on data usage as defined in this data protection and privacy notice.

Reference is made to data protection of personal information and data. Any personal information and data given to the organizers will be used only as follows:

- (a) All data regarding participating athletes, support persons and their kiteboard will be processed and archived for the purpose of this event and events of similar nature that might be of interest to the participant.
- (b) Personal information contains the participant's real name, date of birth, home club, boat type, boat number, address data, mobile phone, email address and emergency contact information. In particular, results, calculatory and visual analyses, position monitoring and race analyses will be published with reference to the competitors' names.

# 26 FURTHER INFORMATION (NOT PART OF THE NOTICE OF RACE)

---

## 26.1 Contacts

<u>Organization</u>	<u>Name / Surname</u>	<u>Email</u>
<b>OA</b>	Catherine Gross	windworlds25@gmail.com
<b>IKA</b>	Markus Schwendtner	markus@kiteclasses.org
<b>WISSA</b>	Will Tuthill	watuthill@verizon.net

## 26.2 Venue Information

<b><u>Edgewater Hotel, Madison Wisconsin USA</u></b>	<b><u>www.theedgewater.com</u></b>
	<a href="https://www.windworlds.com/location.html">https://www.windworlds.com/location.html</a>

## 26.3 Accommodation Information

<b><u>Edgewater Hotel, Madison Wisconsin USA</u></b>	<b><u>www.theedgewater.com</u></b>
	<a href="https://www.windworlds.com/location.html">https://www.windworlds.com/location.html</a>

## 26.4 Travel Information

<u>Destination</u>	<u>Link</u>
<b><u>Madison</u></b>	<a href="#">Destination Madison   Restaurants, Hotels &amp; Things To Do</a>

## 26.5 Visa Information

<u>Venue</u>	<u>Link</u>
	<a href="https://www.windworlds.com/location.html">https://www.windworlds.com/location.html</a>

## 26.6 Shipping Information

<b><u>Hotel: attn: ISSC Participant or FCS Partners LLC 8001 Terrace Ave., Suite 202, Middleton, Wisconsin, 53562 USA 608-829-3450 ett. 622</u></b>	<b><u>FCS Partners - Commercial Office Space</u></b>
---	--

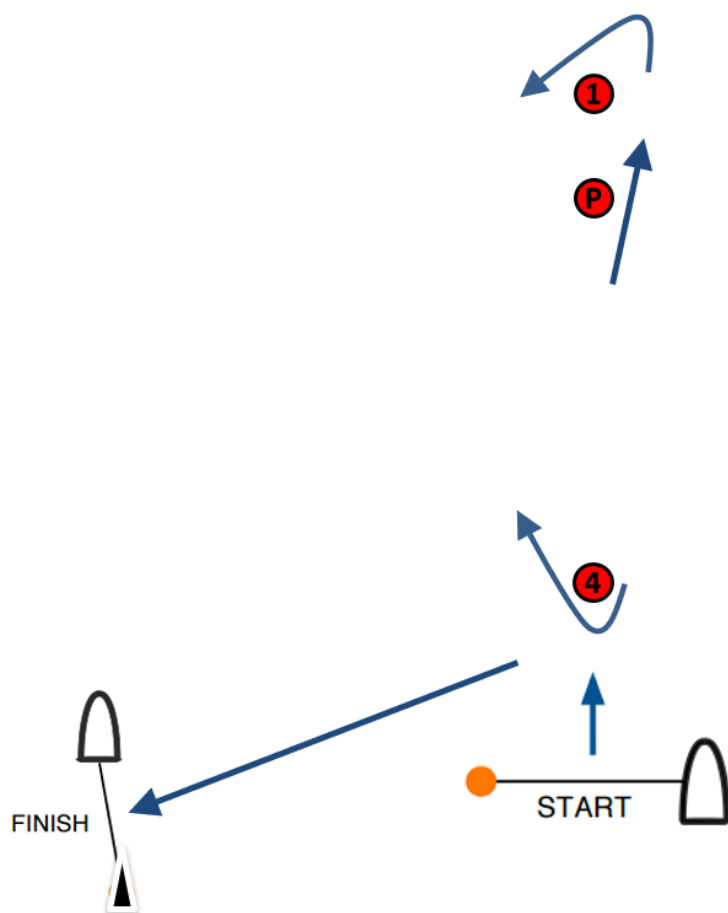




# ADDENDUM 1

## COURSE DIAGRAMS

---

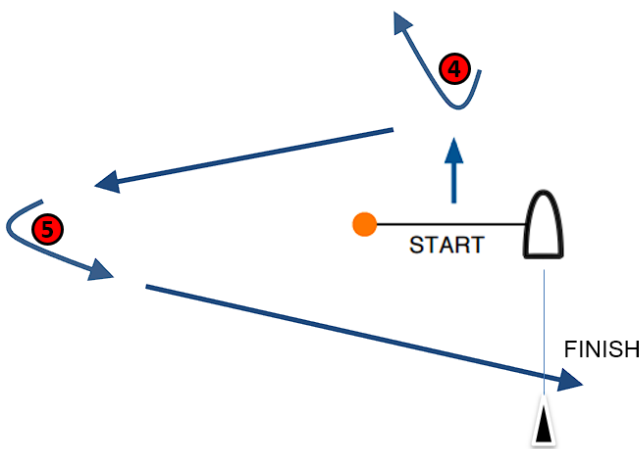
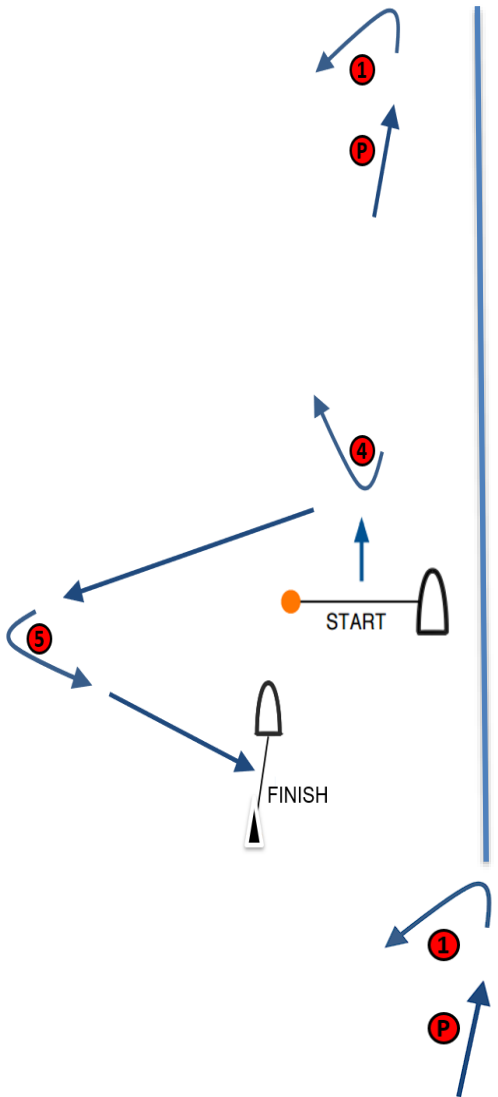


**X 1: Start – Pp – 1p – Pp – 4s – Finish**

**X 2: Start – Pp – 1p – Pp – 4s – Pp – 1p – Pp – 4s – Finish**

**X 3: Start – Pp – 1p – Pp – 4s – Pp – 1p – Pp – 4s – Pp – 1p – Pp – 4s – Finish**

All distances and course angles are approximate.

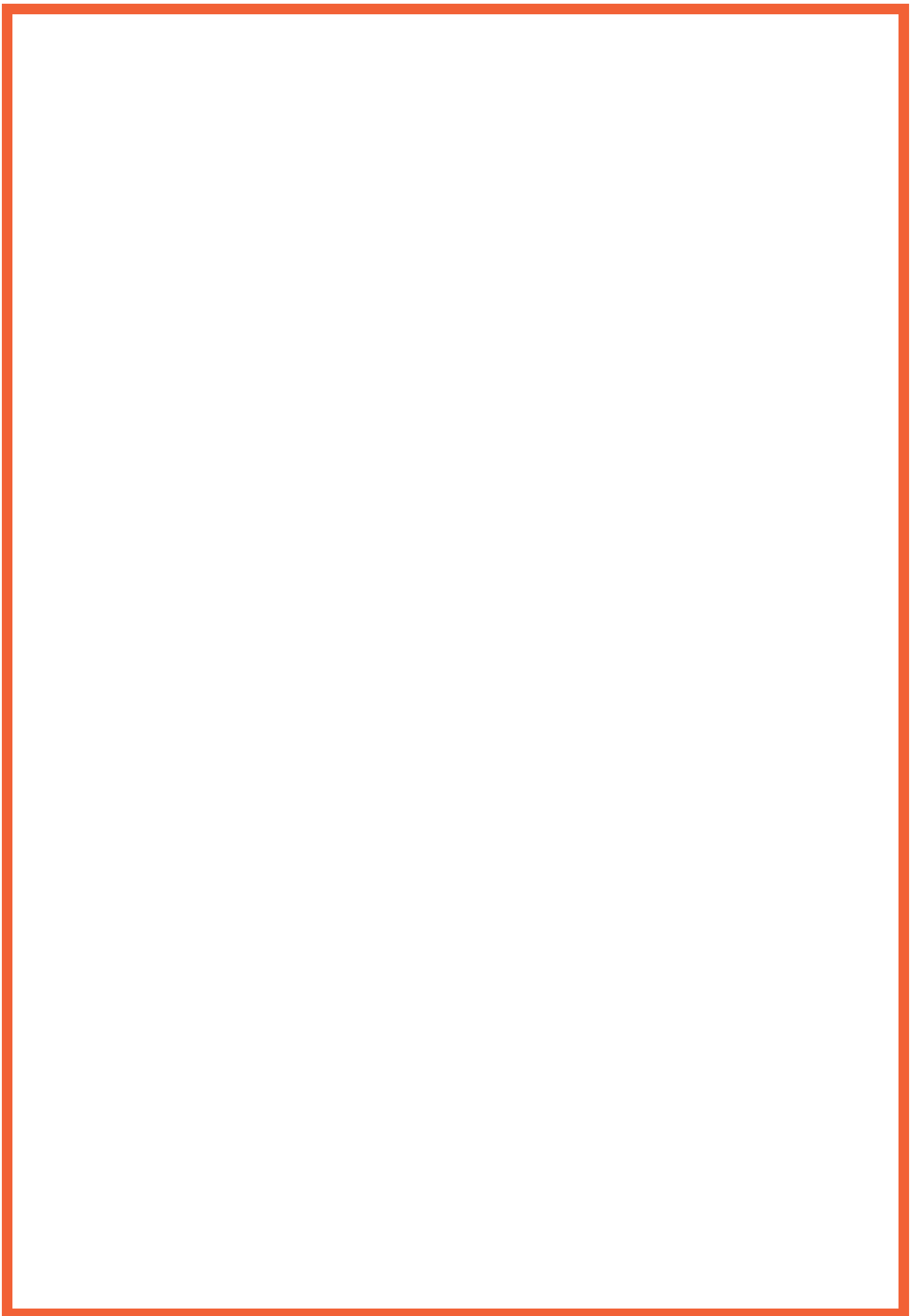


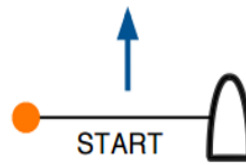
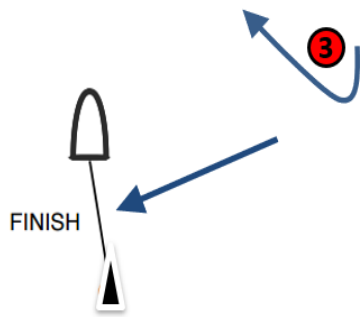
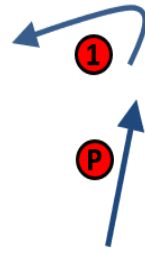
**XS 1: Start – Pp – 1p – Pp – 4s – 5p – Finish**

**XS 2: Start – Pp – 1p – Pp – 4s – Pp – 1p – Pp – 4s – 5p – Finish**

**XS 3: Start – Pp – 1p – Pp – 4s – Pp – 1p – Pp – 4s – Pp – 1p – Pp – 4s – 5p – Finish**

All distances and course angles are approximate.



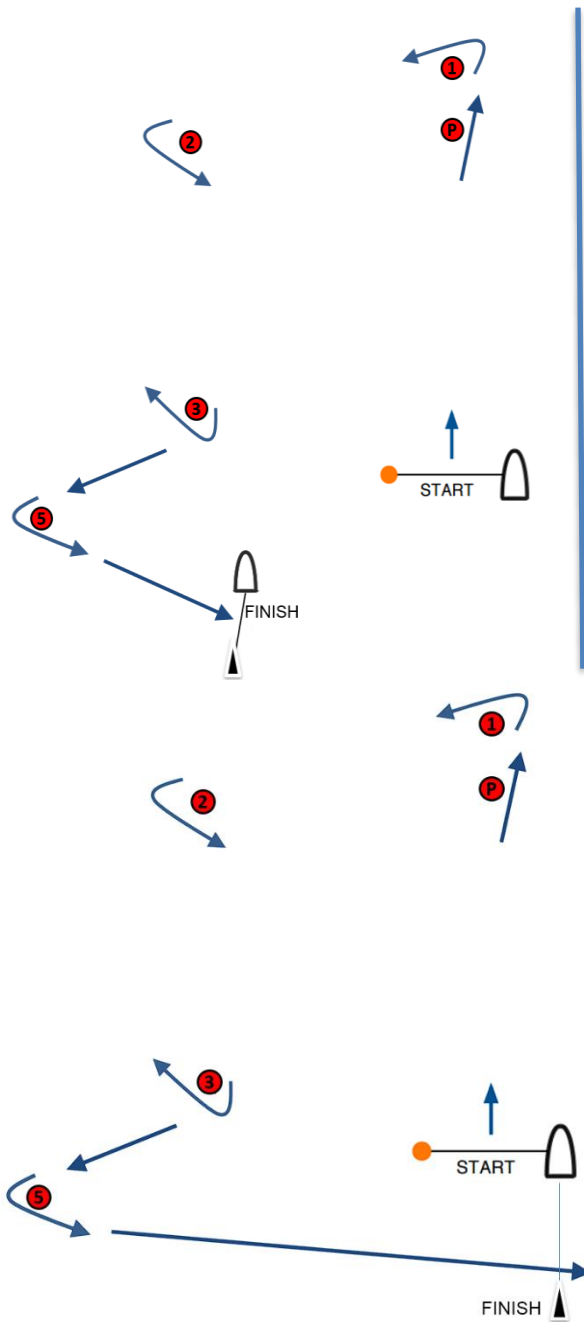


**O 1: Start – Pp – 1p – 2p – 3s – Finish**

**O 2: Start – Pp – 1p – 2p – 3s – 2p – 3s – Finish**

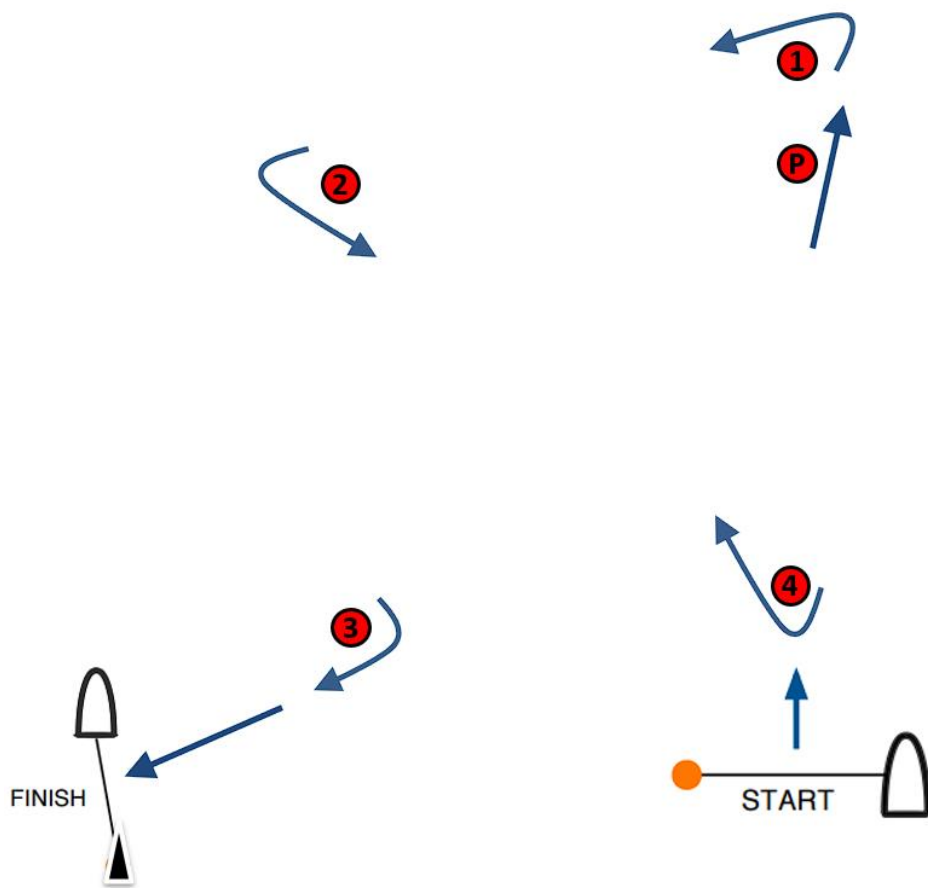
**O 3: Start – Pp – 1p – 2p – 3s – 2p – 3s – 2p – 3s – Finish**

All distances and course angles are approximate.



- OS 1: Start – Pp – 1p – 2p – 3s – 5p – Finish**
- OS 2: Start – Pp – 1p – 2p – 3s – 2p – 3s – 5p – Finish**
- OS 3: Start – Pp – 1p – 2p – 3s – 2p – 3s – 2p – 3s – 5p – Finish**

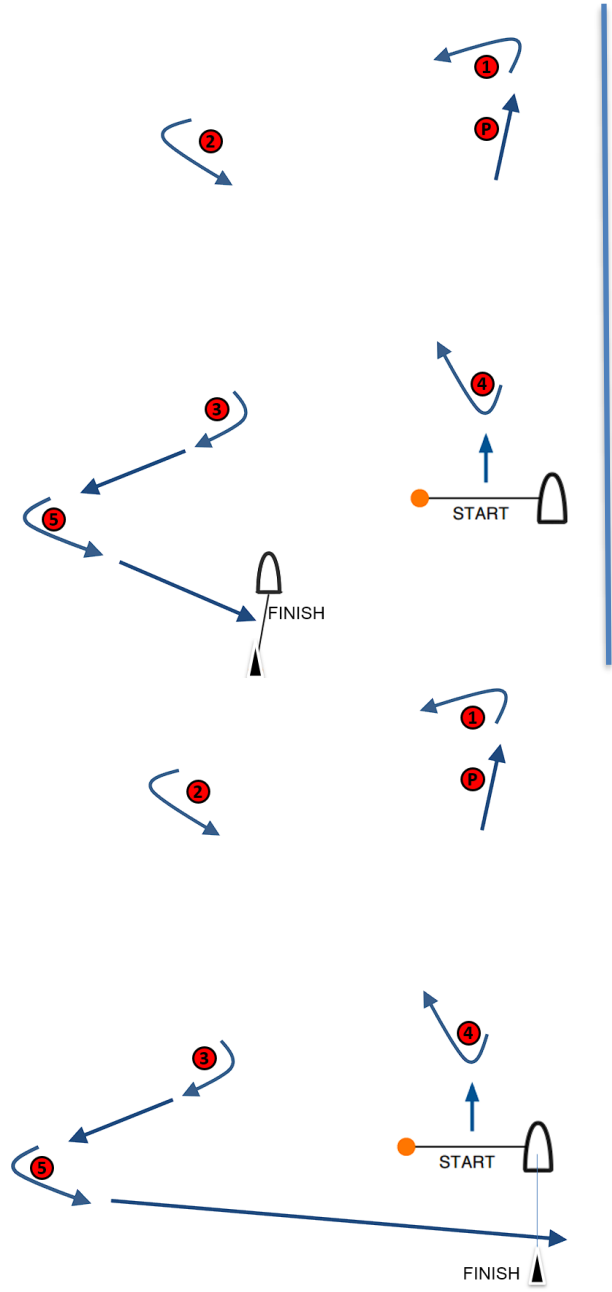
All distances and course angles are approximate.



I 1: Start – Pp – 1p – 2p – 3s – Finish

I 2: Start – Pp – 1p – Pp – 4p – Pp – 1p – 2p – 3s – Finish

I 2: Start – Pp – 1p – Pp – 4p – Pp – 1p – Pp – 4p – Pp – 1p – 2p – 3s – Finish



IS 1: Start - Pp - 1p - 2p - 3s - 5p - Finish

IS 2: Start - Pp - 1p - Pp - 4p - Pp - 1p - 2p - 3s - 5p - Finish

IS 2: Start - Pp - 1p - Pp - 4p - Pp - 1p - Pp - 4p - Pp - 1p - 2p - 3s - 5p - Finish

**ADDENDUM 2**  
**NOT IN USE**

---



# ADDENDUM 3

## SCHEDULE OF RACES

---

Event Stage	04 Feb	05 Feb	06 Feb	07 Feb	08 Feb
	Warning Signal	Warning Signal	Warning Signal	Warning Signal	Warning Signal
	# of races	# of races	# of races	# of races	# of races
<b>Opening Series</b>	[TIME]	[TIME]	[TIME]	[TIME]	[TIME]
<b>Qualifying Series</b>	[TIME]	[TIME]	[TIME]		
<b>Final Series</b>				[TIME]	[TIME]
<b>Single Series</b>	[TIME]	[TIME]	[TIME]	[TIME]	[TIME]
	4	4	4	4	4
<b>Marathon</b>					[TIME]
					1

# ADDENDUM 4

## COURSE AREA AND VENUE MAP

